



	1
	1
	1
	2
	3
	3
	3
	5
	5
	9
	15
	38
	53
	60
	67
	75
	81
	87
	95
	101
ISO14001	101
	105
	105
	107



21

19

2

11	
11	
11 12	
12 11	
12 12	13 4
13	1
13	
13 12	
14	
14	
15	I SO14001
15	
17	1
17	
18	I SO14001
18	

	07			06			05			01 04					
	83	20	103	111	36	147	129	37	166	162	46	208	485	139	624
	32	6	38	25	12	37	36	13	49	43	19	62	136	50	186
	38	6	44	35	4	39	40	4	44	48	12	60	161	26	187
	153	32	185	171	52	223	205	54	259	253	77	330	782	215	997

	07			05 06					
	2	1	3	7	0	7	9	1	10
	3	1	4	6	3	9	9	4	13
	6	0	6	3	0	3	9	0	9
	11	2	13	16	3	19	27	5	32

	3
	16
	12
	15
	(1)
	2
	48

	33
	9
	42

18

VZB

18

H18.12/13

18

30

H19.3/22

VZB

<http://www.kankyo-u.ac.jp/general/mission/>

principles/

Campus Guide

ISO14001

18

FD Faculty Development

18

VZB

VZB

FD

		668	/
		320	
		320	
		40	

		166	2	668	624	16	14
		79	2	320	186	12	8
		79	2	320	187	15	8
		20	-	40	32	1	-
		-	-	-	-	2	-
		-	-	-	-	-	16
		344	6	1,348	1,029	46	46

19

	175,319	13,080
	27,584	14,676

VZB

VZB

FD

19

14

21

13

~~VZB~~

15

2007 19

Teachi ng Assi stant

TA

e-

e-

e-

21

x

18

2005 17

2001 13

2005 17

2007 19

CAMPUS GUIDE

17

2005

2001 13

21

2007 19

23

[

10 11 12

VZB

15

VZB

P. 28

GPA Grade Point Average

AA	90	100	80	89	AA	GPA
4.0	3.0	2.0	1.0			

GPA

GPA

AA	x 4.0	x 3.0	x 2.0	x 1.0	x 0.0	-
AA		AA	AA			

	24
	76
42	

	19	23	19
	16		16
	39	35	39
	12	16 14	14 12
		18	20
	48		10
	16	26 24	16 16
	76	80	76
	124	124	124

14	30

	16 10	16	
	10		16
			6
	30	30	30

TA SA Student Assistant

14

× 28

[

2007 19

19

2005

17

2008

20

2007

2005

17

19

PBL ProblemBased Learning

CG

UA

2007

19

IS

CS

17

2005

07

19

AO

19

H19. 4/1

			07			06			05		
	166	664	103	103	0	150	147	1	172	166	
	79	316	38	38	0	37	37	3	60		
	79	316	44	44	0	40	39	0			
	324	1,296	185	185	0	227	223				

			07	
	10	20	5	10

		07	(%)	06	(%)	05	(%)	04	(%)	03	(%)	02	(%)	01	(%)
	166	103	62.0	150	90.4	171	103.0	191	115.1	184	110.8	213	147.0	256	154.2
	79	38	48.1	37	46.8	58	73.4	62	79.7	74	96.2	93	117.7	107	140.5
	79	44	55.7	40	50.6	48	60.8	59	74.7	80	102.5	88	111.4	106	135.4
	324	185	57.1	227	70.1	277	85.5	312	96.6	338	105.2	394	121.9	469	146.3

		07	(%)	06	(%)	05	(%)
	10	3	30.0	7	70.0	8	80.0

14

AO

20

18

VZB

HART

19

AO

18

75 100

20

VZB

10
10

300

365 24

VÆB

[Redacted]

[Redacted]

[Redacted]

[Redacted]

[Redacted]

[Redacted]

[Redacted]

[Redacted]

[Redacted]

[Redacted]

[Redacted]

[Redacted]



25

20

18 140

16

18

20

18

	324	191	60	44	42	28	23	178

19

18

20

30

17

49

10 11

15

10

11

50

18

32

54

19

9.6

11.7

17.4

20

27

22

93.8

93.2

94.5

18

19

18

51

20

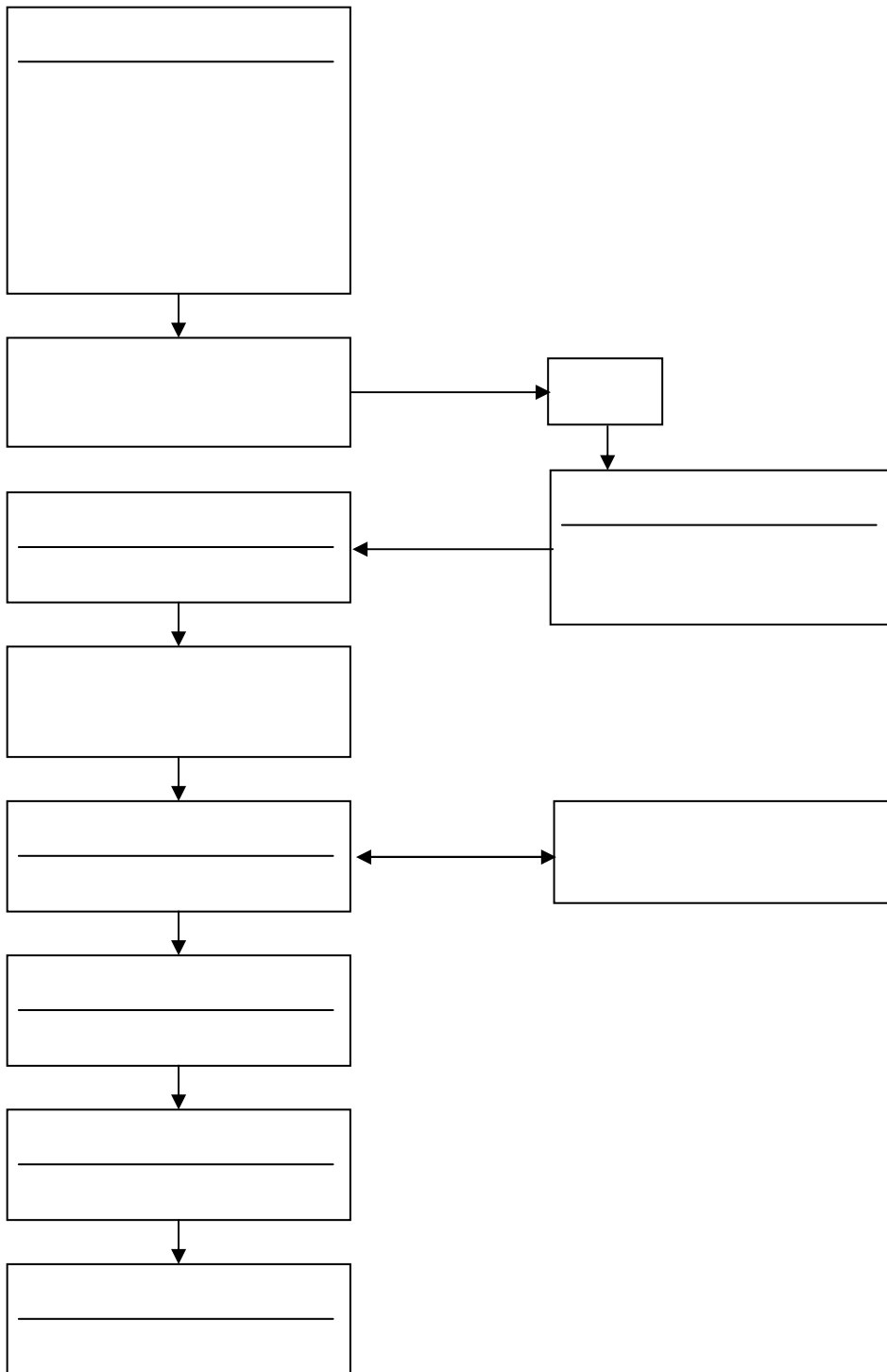
18

27 12 46 46
15 16 12 10
72
60 61 65 10 56
46 40
53

27

10

18



Teaching Assistant

Teaching Assistant

TA

SA

70

1,000

30,000

18

300

19

150

002

17 10

002

002

TA

SA

18

FD

FD

H18 8/9	FD	
H18 10/10	FD	
H18 11/8	FD	GP GP 18
H19 3/6	FD	FD
H19 3/29	FD	

FD

FD

33

42

31

30

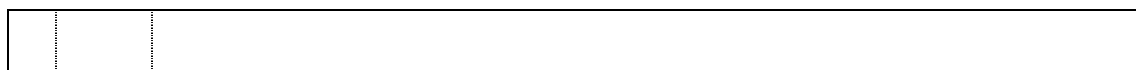
16

18

60

25	
27	
10	
10 10	
11	
11	
11 22	
11 29	
12	

H19. 5/1



学務課	

就職

VÆB

18

18

SD Staff Development
OJT On the Job Training

FD

66

理事会			
理事長			学長

H19. 5/1

24 H19. 5/1

21

18

68

13 12 19

16

15

17

16

VZB

<http://www.kankyo-u.ac.jp/general/publication/check/0001/>

16

2001

13

2007 19

2005 17

CS

IS

A B

71

15

16

18

15

17

SD

72

18

18

16

73

FD SD

12

VZB

VZB

17

A4

17

1,000

18

1,200

18

500

PR

18

2006

2006

N KKO

16

18

77

VZB

VZB

VZB

18

18

BDF

CO₂

18

340

16

18

10

Q 2

18

16

18

16	14	10 5	35 7
17	9	11 7	33 3
18	12	3 1	16 7

16

18

16	22	42,460	19	29,696
17	20	35,152	15	22,885
18	18	38,027	13	23,080

20

50

1/3

10

100

80

				km	
	30 JR		20 JR		20
		178,155		13,080	13.6
300		26,125			
			1,665		
300		26,125			
			1,665		
		28,159		14,676	1.9
				24	
		18	65,235		
150				LAN	

	11	12	13	14	15	16	17	26	27	28	29	30
	498	115	118	115	120	118	298	110	120	110	120	234
	5	15	20	17	16	12	13	7	12	2	10	11
	5	16	16	15	15	6	12	0	15	2	7	8

	18	19	20	21	22	23	24	25
	36	36	36	36	36	36	36	36
	18	11	10	12	8	8	8	3
	18	11	10	12	8	8	6	3

18

24

36

29

18

25

15

27

365 24

	11	12	13	14	15	16	17	/	26	27	28	29	30	/
LAN														
	11	8	8	8	128	8	8	179	8	128	8	128	16	288

	18	19	20	21	22	23	24	25		/
LAN										
	-	-	-	-	-	-	-	-		
	40	40	40	40	40	40	40	40	320	787

LAN

LAN

2,300

LAN

27

LAN

OS Office

VZB

18

19

TUES

BDF

02

VVB

2006 18

2005 17

14

60

19

20

13

85

AED

24

365

18
17
18 2,700
1,000 2,500 500 23
250 10 15
18
19
10
2005 17
18 1,000
19

18

18

19

18

18

19

12

17

18

18

11

18

25

55

1,088

18 10 8

17

42

18

28

17

17

2005

19

19

VZB

19

16

17

19

89

136

18

18

18 11 15

54

18

32

18

90

17

16

21

2003

15

14

PR

113
18
91
18
18
10
ISO
18
18
18

10

		8/12
ISO		5/28 100
	10	7/16 8/8 8/19 8/26 10/28 29 12/8 10
JAVA		11
		8/9
MB	MB	
		300
		10/28 29
		10/29 30
		11
ISO		11/18

PR

15

ISO14001

ISO14001

2003 15

2007 19
500

%

a	94			
b	103			
c		27	10	108
d		18	10	131
		22		
e	69			

PR

18

19

PR

18

11

11

2006	2006(H18) 10/17 18		17 11
2006	2006(H18) 12/8 10		
2006	2006(H18) 12/14 16		

2007(H19)
2/8 9

18

VZB

16

VZB

VZB

18

VZB

TOP

TOP

VZB

12

VZB

VZB

VZB

VZB

CD-ROM

73

20

18

19

13 14

18

19

28

CD-ROM

PR

2006
VZB

VZB

VZB

I SO14001
I SO14001

I SO14001

15

26

I SO14001

18

19

EN8

I SO14001

13

I SO-

VG

I SO-VG

I SO14001

EN8

EN8

14

22



14

16

LPG

17

CO₂

LPG

85

90

2006

18

CO₂

ISO

ISO

18

20

18

ISO

30

ISO

2006

ISO14001

40

ISO

ISO

ISO14001

ISO

ISO14001

ISO

EN8

EN8

EN8

EN8

EN8

EN8

EN8

ISO

ISO

EN8

EN8

ISO
ISO
10

ISO

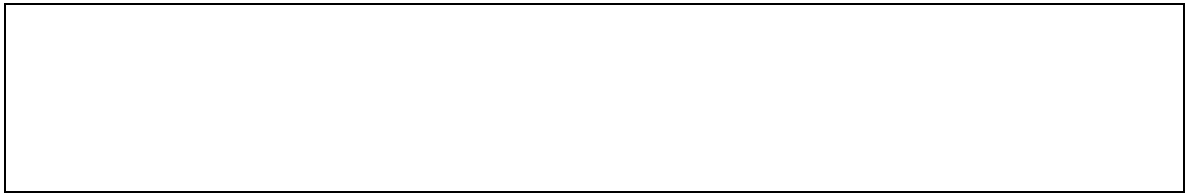
ISO

18

10 P. 93

	(2)	(2)	
	(2)	(2)	
	(2)	(2)	
	(4)		

PBL



24

VZB

FD

GP

106



(3)

(1)

(2)

(4)

-(1)

2006 18

-(2)

2006 18

-(3)

2001 13

Tree House

-(4)

Apodemus speciosus

Panesthia angustipennis

Apodemus speciosus

GPS

Apodermis speciosus