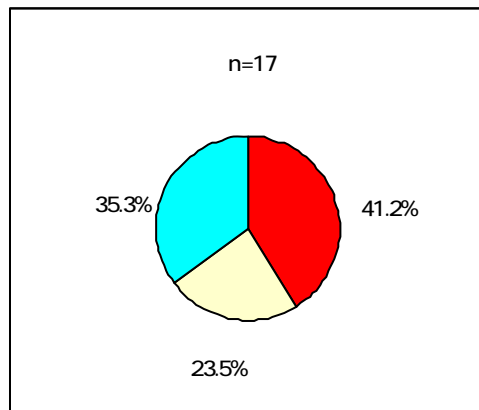


20
 2005 6 16 6 30
 17

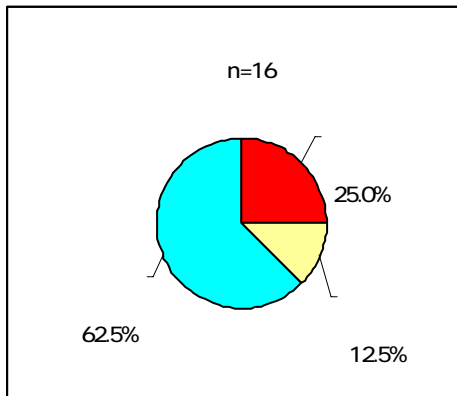


SA

11
 6



SA



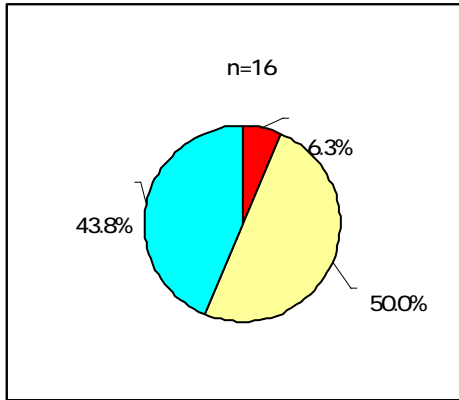
4

4

12
 2



SA



6

8

9

5

12

7

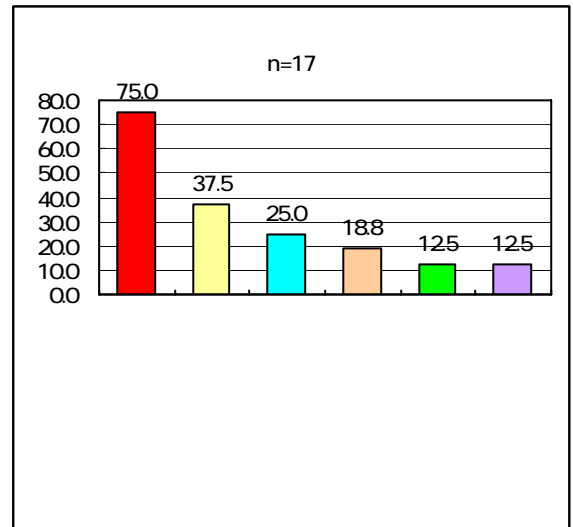
1



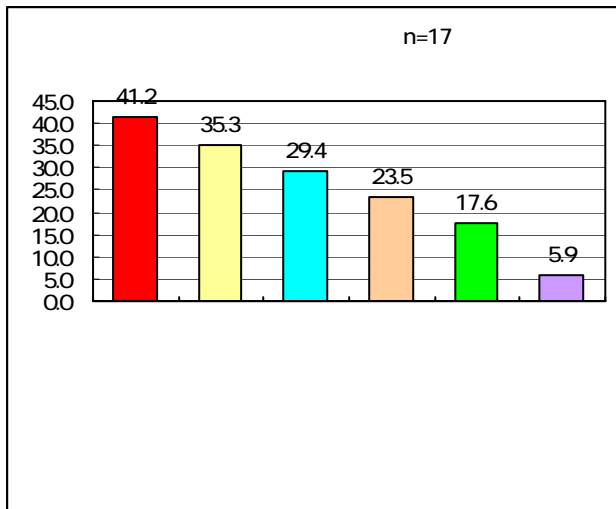
M

7

7



M

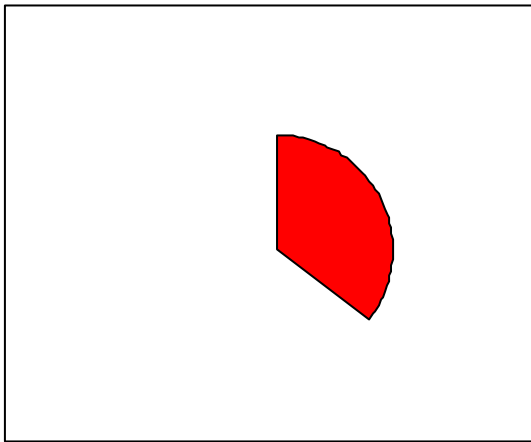




MA



SA



4

5

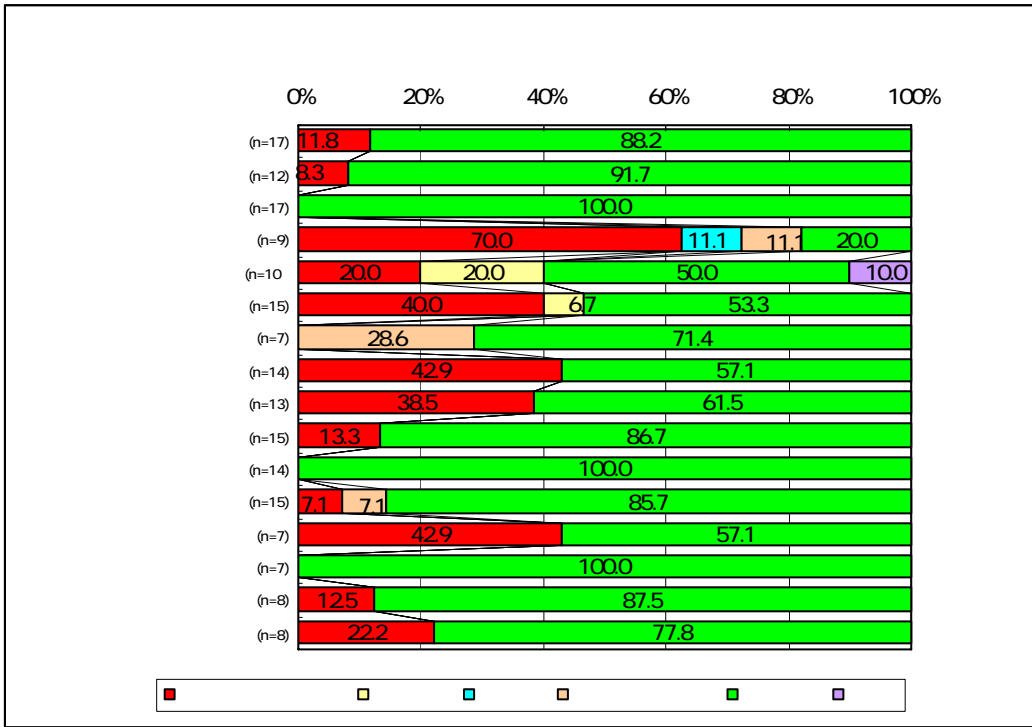
4

9

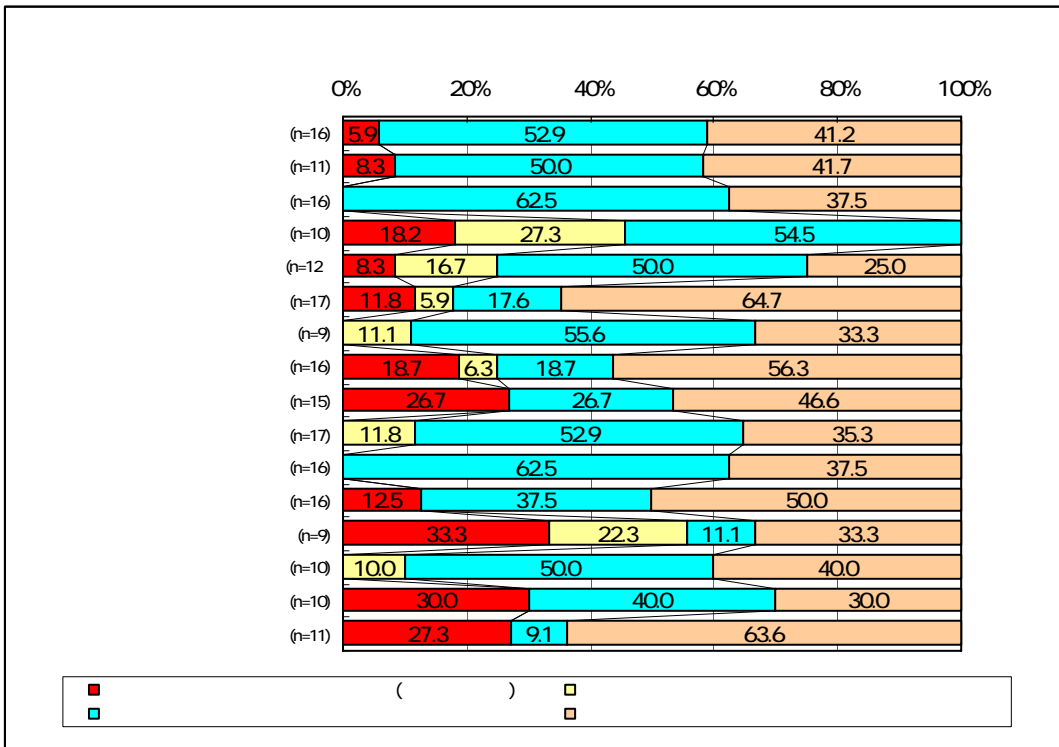


17 6

MA



SA



10**M**

(n=11)	0	2	1	5	3	0
(n=8)	1	1	1	2	2	1
(n=9)	1	1	0	3	2	2
(n=3)	0	2	0	1	0	0
(n=8)	1	1	1	2	1	2
(n=3)	1	1	0	1	0	0
(n=4)	0	0	2	1	1	0
(n=3)	1	1	0	1	0	0
(n=4)	2	0	0	2	0	0
(n=11)	1	2	0	3	2	3
(n=9)	1	1	0	3	2	2
(n=6)	1	0	0	3	1	1
(n=3)	0	1	0	1	1	0
(n=7)	0	1	0	2	3	1
(n=2)	0	0	0	0	1	1
(n=1)	0	0	0	0	0	1

11**M**

(n=4)	0	2	2	0	0	0
(n=2)	1	1	0	0	0	0
(n=2)	0	0	1	0	1	0
(n=4)	0	1	2	0	1	0
(n=6)	1	2	2	0	1	0
(n=2)	0	1	1	0	0	0
(n=6)	0	2	3	0	1	0
(n=2)	0	1	1	0	0	0
(n=4)	0	1	2	0	1	0

