

(



1

4

1

WTO

2006

1

3,750

9.7

2003

2010

1

JNTO 2008 19

1,000
2008 10

2
2.1

JNTO 2005 1990

2006

0.1 0.2

1 58.5 57.4 3

2

1

3

3

1992

1

2008 12 2

1998

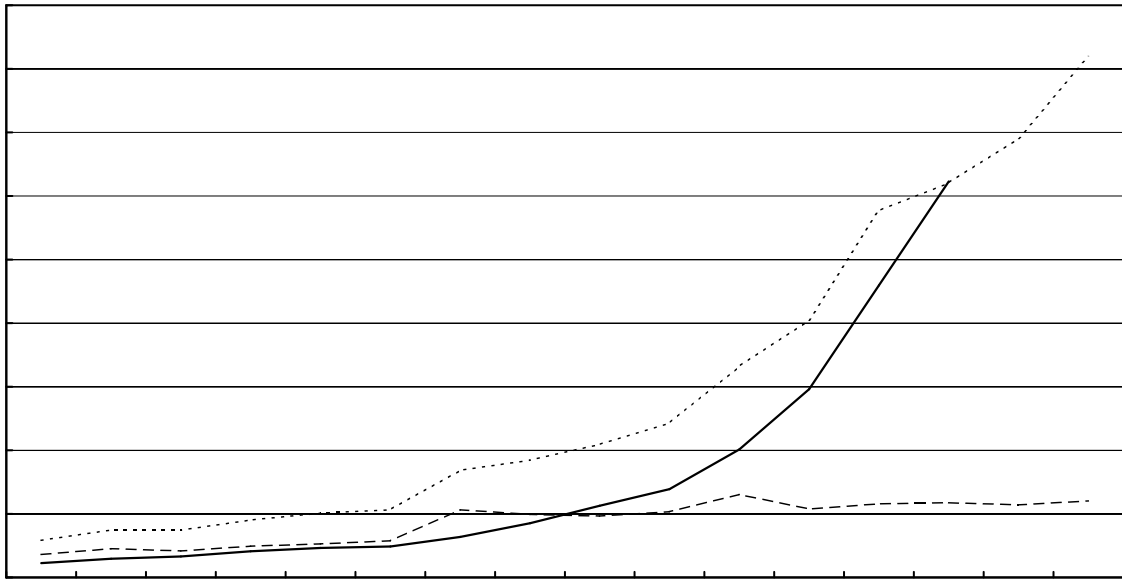
100 2000

1,000 2003 2

1

		%		%		%
1992	292.87	-	180.94	-	111.93	-
1993	374.00	27.7	227.38	25.7	146.62	31.0
1994	373.36	-0.2	209.13	-8.0	164.23	12.0
1995	452.05	21.1	246.66	17.9	205.39	25.1
1996	506.07	12.0	264.68	7.3	231.34	12.6
1997	532.39	5.2	288.43	9.0	243.96	5.5
1998	842.56	-	532.53	-	319.02	-
1999	923.24	9.6	496.63	-6.7	426.61	33.7
2000	1,047.26	13.4	484.18	-2.5	563.09	32.0
2001	1,213.44	15.9	518.77	7.2	694.54	23.3
2002	1,660.23	36.8	654.00	26.1	1,006.00	44.9
2003	2,022.19	21.8	539.65	-17.5	1,481.09	47.2
2004	2,885.29	42.7	579.40	7.4	2,297.90	55.1
2005	3,102.63	7.5	588.63	1.6	2,514.00	9.4
2006	3,452.36	11.3	572.44	-2.8	2,879.91	14.6
2007	4,095.00	18.6	603.00	5.3	3,492.00	21.3

1998



1,000

1998

4

2000

2005

8.08

4

3,102

3.84

2003

7,460

6,145

3,873

3,607

5

2005

2.4

3

184.4

118

20.9

2.2

13.6

1994

20

13

4

2000 9

2007

7

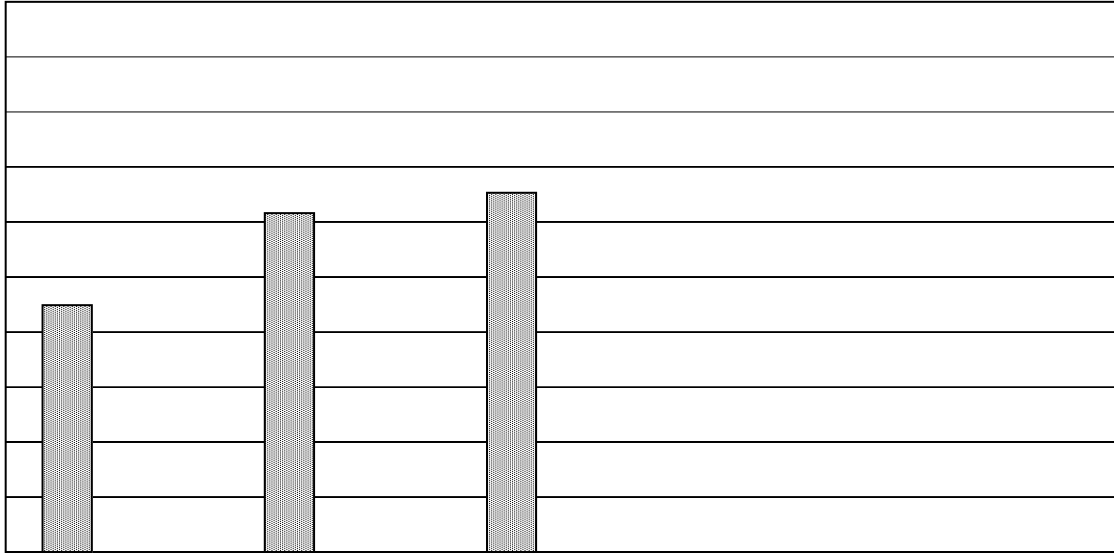
2007

94

3 JNTO 2007 512

4 Wang 2007 72-80 .

5 2004 124-128



2

2003		448,782	95,991	31,181
	%	100.0	21.4	6.9
	%	-0.8	-5.2	-6.9
2004		616,009	189,692	47,488
	%	100.0	30.8	7.7
	%	37.3	97.6	52.3
2005		652,820	201,940	58,244
	%	100.0	30.9	8.9
	%	6.0	6.5	22.6
2006		811,675	297,025	123,955
	%	100.0	36.6	15.3
	%	24.3	47.1	112.8
2007		942,439	407,286	227,869
	%	100.0	43.2	24.2
	%	16.1	37.1	83.8

p184,185

JNTO

2008

1 GDP 1,000 2003
 2,000 2006
 1,000 GDP
 6
 1990 GDP
 1,000
 2007 40
 2006 2007
 47.1 37.1 1997
 2007 4 1
 2006
 2007 112.8 83.8

2005 7
 2004
 2000 9
 5.09
 509
 2020
 215
 9
 16
 2005 12
 2008 7
 200
 1.6
 2007 1
 2007
 2008 100
 40
 79 7
 2000
 10
 4 3
 3
 2 11 7
 2 3 5
 47

UNWTO

2020 1
 8 1994 2007
 2.15

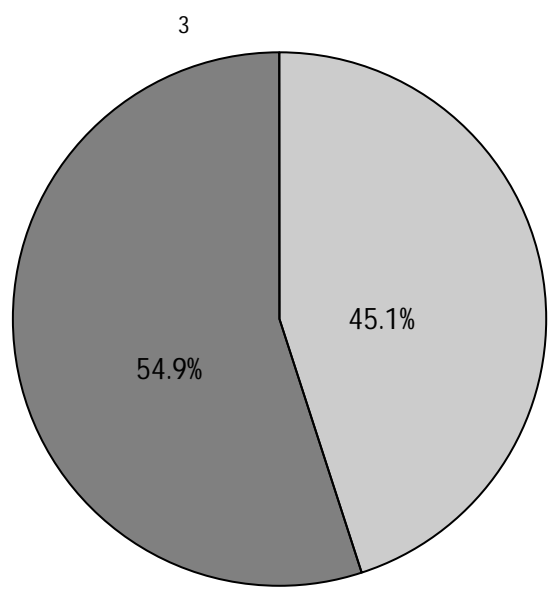
7 JNTO 2008 38-39
 8 UNWTO 1997 www.world-tourism.org .
 9 Wang 2007 72-80 .
 10 2008

745.9
2007

2005
28,131
2

358.1
20,604
3,911
1 GDP

TORC



2008 12 24 29

3.1.2
4 4

18 25 26 35
35.7 41.4

3.1

370

20 5.4

39 10.5

5

4

			()
1	18	1	0.3
2	18 25	132	35.7
3	26 35	153	41.4
4	36 45	47	12.7
5	46 55	24	6.5
6	56 65	13	3.5
7	65	0	0
		370	100

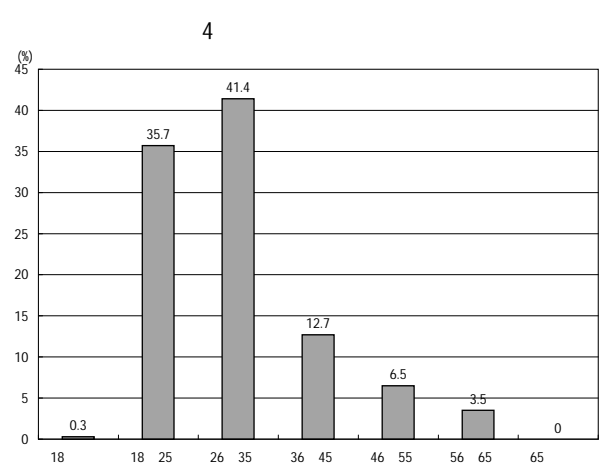
3.1.1

3 3

9.8

3

		()
1	167	45.1
2	203	54.9
	370	100



77
18 25 26 35 36 45
46 55

3.1.3

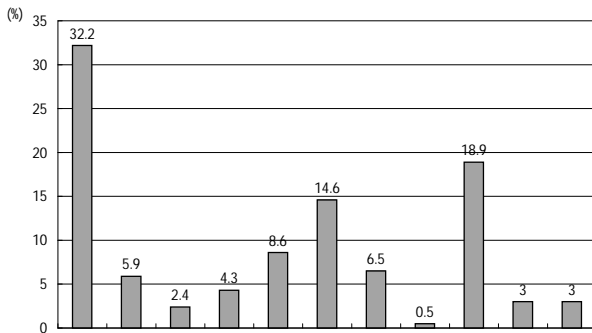
32.2

18.9 14.6
65

5

		()
1	119	32.2
2	22	5.9
3	9	2.4
4	-	16 4.3
5	32	8.6
6	54	14.6
7	24	6.5
8	2	0.5
9	70	18.9
10	11	3
11	11	3
	370	100

5



3.1.4

90

6

		()
1	8	2.2
2	31	8.4
3	70	18.9
4	191	51.6
5	69	18.6
6	1	0.3
	370	100

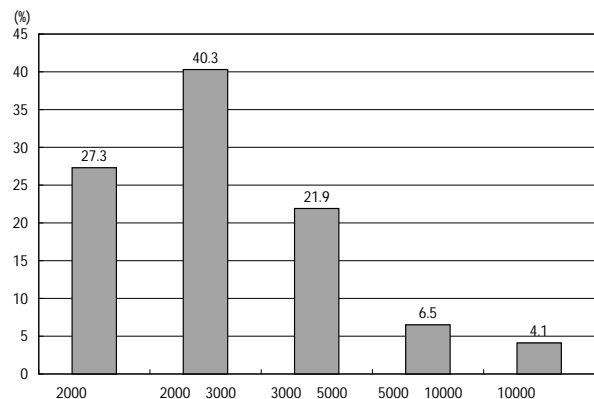
3.1.5

90 5,000
2,000 3,000
40.3

7

1

		()
1	2,000	40.3



2,000

27.3

10

11

1,250 2008

12

940 2007

13

1,315 2008

14

15

3.2

16

17

18

18

8

18

8

5

1

2

3

4

5

18

1 8

1

2

3

4

5

6

7

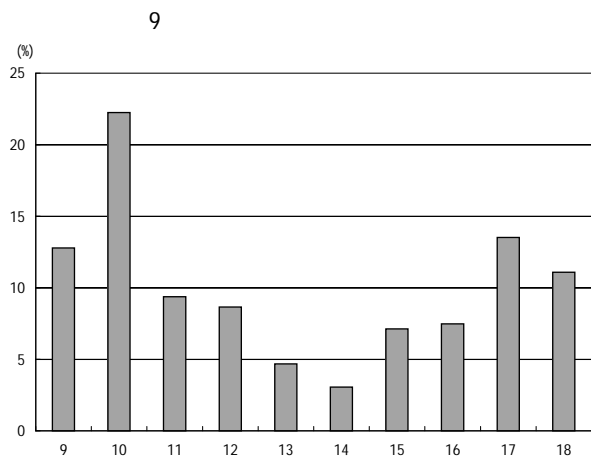
8

9 18

9

18
 9 9 10
 9 5 3
 4 1 3 5 9
 10 17
 9 18 10
 11
 2 4 6 7 8 12 15
 9 5 16 5 10
 4 14 13 5
 8
 5
 10 6 50
 50
 12 13
 14 15 17 18 4 3
 30 10
 11 16 1 25

3.3



9

	9	10	11	12	13	14	15	16	17	18	
	142	162	32	18	8	3	2	3	0	0	370
	0	85	62	52	32	25	38	38	38	0	370
	0	0	10	26	12	6	39	42	112	123	370
	142	247	104	96	52	34	79	83	150	123	1110
	12.79	22.25	9.37	8.65	4.68	3.06	7.12	7.48	13.51	11.08	100
	3	1	5	6	9	10	8	7	2	4	-

12

50

10

10

4

4.1

10

80

4.2

11

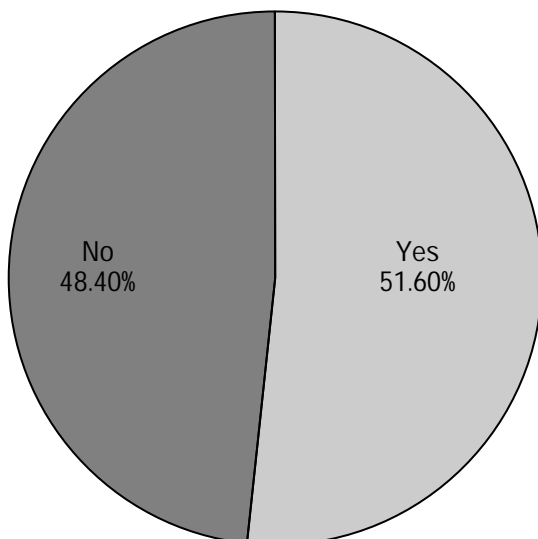
11

10

			()
1	Yes	191	51.6
2	No	179	48.4
		370	100

			()
1		103	53.9
2		9	4.7
3		22	11.5
4		2	1.0
5		10	5.2
6		21	11.0
7		15	7.8
8		4	2.1
9		3	1.6
10		2	1.0
		191	100

10



12

			()
1		59	33.0
2		40	22.3
3		45	25.1
4		2	1.1
5		5	2.8
6		19	10.6
7		2	1.1
8		3	1.7
9		4	2.2
		179	100

5,000 No Yes Yes
2,000
3,000
No
Yes No

18

3

			()
1		49	13.2
2		111	30.0
3		69	18.6
4		69	18.6
5		47	12.7
6		2	0.5
7		7	1.9
8		16	4.3
		370	100

4

18

22

1 50

3

1 30

1 5

30

2009 5

MICE Meeting, Incentive, Convention/
Conference & Exhibition 1

JNTO . 2008.

2008 9 7

2004.

24.

2008.

21 . 29.

Wang Xiaofeng 2007 , The Scale Situation, Tendency
and Main Influential Factors of Chinese Citizen's
Traveling to Japan.

16 18

2007

UNWTO 1997 , 2020 Vision, a report prepared for
a meeting in Turkey, in News/Feb-March. [www.
world-tourism.org](http://www.world-tourism.org).

<謝辞>

<参考文献>

2001

2015 2020

2004-2006.

2002-2008.

2002.

JNTO 2007.